



# 2018-19 ECTARC Webinar Calendar

December 2018 to June 2019 - enrol online at [www.ectarc.com.au](http://www.ectarc.com.au)

## December 2018

4	Purposeful program and practice - <b>NESA Registered PD</b>	10:00am – 12:00pm	\$60
4	Child Protection overview (optional bridging to CHCPRT001 available for an additional \$30) <b>NESA Registered PD</b>	6:30pm – 8:30pm	\$60
5	Creative aspirations	3:00pm – 5:00pm	\$60
6	Support children to connect to their world	10:00am – 12:00pm	\$60

## February 2019

5	The Educational Leader - <b>NESA Registered PD</b>	10:00am - 12:00pm	\$60
5	Purposeful program, practice, assessment and planning - <b>NESA Registered PD</b>	6:30pm - 8:30pm	\$60
12	Lead to inspire	3:00pm – 5:00pm	\$60
12	Communication and team building	6:30pm - 8:30pm	\$60
13	Embracing the EYLF	3:00pm – 5:00pm	\$60
19	Navigating the NQS - <b>NESA Registered PD</b>	10:00am – 12:00pm	\$60
19	Work, health and safety in an early childhood setting	4:00pm – 6:00pm	\$60
21	Supporting children's behaviour – a shared approach - <b>NESA Registered PD</b>	3:00pm – 5:00pm	\$60
26	Let's get physical	4:00pm – 6:00pm	\$60
26	A place to be me - creating welcoming and intriguing spaces	6:30pm – 8:30pm	\$60
27	Child Protection overview (optional bridging to CHCPRT001 available for an additional \$60) <b>NESA Registered PD</b>	2:00pm – 4:00pm	\$60
28	Embracing the My Time, Our Place	10:00am – 12:00pm	\$60

## March

5 12 19	Child Protection - CHCPRT001 Identify and respond to children and young people at risk has 3 SESSIONS – (ACCREDITED) - <b>NESA Registered PD</b> * Part 1 held 5 Mar, Part 2 held 12 Mar, Part 3 held 19 Mar - all sessions 3:00pm - 5:00pm.	3:00pm - 5:00pm	\$210* for 3 sessions
5	Understanding the National Quality Framework - <b>NESA Registered PD</b>	6:30pm – 8:30pm	\$60
6	STEM in early childhood – why it matters!	10:00am – 12:00pm	\$60
12	Promote Aboriginal and/or Torres Strait Islander cultural safety <i>presented by Curijo</i>	10:00am – 12:00pm	\$60
14	Who's responsible? – Approved provider, Nominated supervisor, Responsible person? - <b>NESA Registered PD</b>	3:00pm - 5:00pm	\$60
19	Reflection – engaging in professional practice - <b>NESA Registered PD</b>	5:00pm - 7:00pm	\$60
20	Leading self-assessment - <b>NESA Registered PD</b>	2:00pm - 4:00pm	\$60
26	EYLF in relation to babies and toddlers	3:00pm – 5:00pm	\$60
26	Safe Food Handling Overview	6:30pm – 8:30pm	\$60
28	Supervision and collaboration in SAEC	10:00am – 12:00pm	\$60

## April

2	Duty of care	10:00am – 12:00pm	\$60
2	Support children to connect to their world	3:00pm – 5:00pm	\$60
3	Interactive media use for children	10:00am – 12:00pm	\$60
4	Through the eyes of a toddler	2:00pm - 4:00pm	\$60

Professional development from your service or home.



## April

9	Navigating the NQS - <b>NESA Registered PD</b>	3:00pm – 5:00pm	\$60
9	Creative aspirations	5:00pm - 7:00pm	\$60
11	Developing Cultural Competency	3:00pm – 5:00pm	\$60
16	Language and literacy in early childhood	10:00am – 12:00pm	\$60
16	Oh No! It's Raining!!	6:30pm – 8:30pm	\$60
17	Purposeful program, practice, assessment and planning - <b>NESA Registered PD</b>	10:00am – 12:00pm	\$60
30	Rest and Relaxation	3:00pm – 5:00pm	\$60
30	Promoting Protective Behaviours	5:00pm - 7:00pm	\$60

## May

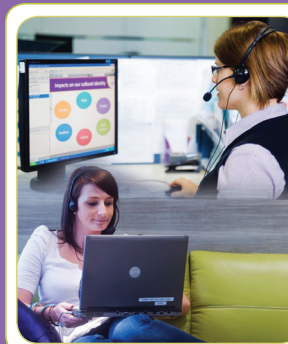
1	Lead to inspire	10:00am – 12:00pm	\$60
7 14 21	Child Protection - CHCPRT001 Identify and respond to children and young people at risk has 3 SESSIONS – (ACCREDITED) - <b>NESA Registered PD</b> * Part 1 held 7 May, Part 2 held 14 May, Part 3 held 21 May - all sessions 10:00am - 12:00pm.	10:00am – 12:00pm	\$210* for 3 sessions
7	Embracing the EYLF	6:30pm - 8:30pm	\$60
9	Supporting children's behaviour – a shared approach - <b>NESA Registered PD</b>	2:00pm – 4:00pm	\$60
14	Reflection - engaging in professional practice	2:00pm - 4:00pm	\$60
14	Communication and team building	5:00pm - 7:00pm	\$60
15	Supervision and collaboration in SAEC	12:00pm – 2:00pm	\$60
21	STEM in early childhood - why it matters	6:30pm - 8:30pm	\$60
23	EYLF in relation to babies and toddlers	5:00pm – 7:00pm	\$60
28	Through the eyes of a toddler	10:00am – 12:00pm	\$60
28	Child Protection overview (optional bridging to CHCPRT001 available for an additional \$60) <b>NESA Registered PD</b>	6:30pm – 8:30pm	\$60
29	Safe Food Handling overview	2:00pm – 4:00pm	\$60

## June

4	A place to be me - creating welcoming and intriguing spaces	3:00pm – 5:00pm	\$60
4	Support children to connect to their world	6:30pm – 8:30pm	\$60
5	Who's responsible? - Approved provider, Nominated Supervisor, Responsible Person? - <b>NESA Registered PD</b>	3:00pm – 5:00pm	\$60
11 18 25	Child Protection - CHCPRT001 Identify and respond to children and young people at risk has 3 SESSIONS – (ACCREDITED) - <b>NESA Registered PD</b> * Part 1 held 11 Jun, Part 2 held 18 Jun, Part 3 held 25 Jun - all sessions 4:00pm - 6:00pm.	4:00pm – 6:00pm	\$210* for 3 sessions
11	Creative aspirations	6:30pm – 8:30pm	\$60
12	Understanding the National Quality Framework 2018 - <b>NESA Registered PD</b>	10:00am – 12:00pm	\$60
18	Promote Aboriginal and/or Torres Strait Islander cultural safety <i>presented by Curijo</i>	10:00am – 12:00pm	\$60
19	Embracing the My Time, Our Place	12:00pm – 2:00pm	\$60
20	Supporting children's behaviour - a shared approach	5:00pm – 7:00pm	\$60
25	Leading self-assessment - <b>NESA Registered PD</b>	10:00am – 12:00pm	\$60
26	The Educational Leader - <b>NESA Registered PD</b>	3:00pm – 5:00pm	\$60
27	Oh no! It's raining!	3:00pm – 5:00pm	\$60

# Enrol today!

ECTARC 2018/19 December to June Calendar



## ACCREDITED CHILD PROTECTION

3 webinar sessions + assessment to be completed in your own time



**NESA Registered PD**

[www.ectarc.com.au](http://www.ectarc.com.au)